



# LAMINATE FLOORING CATALOG

2025

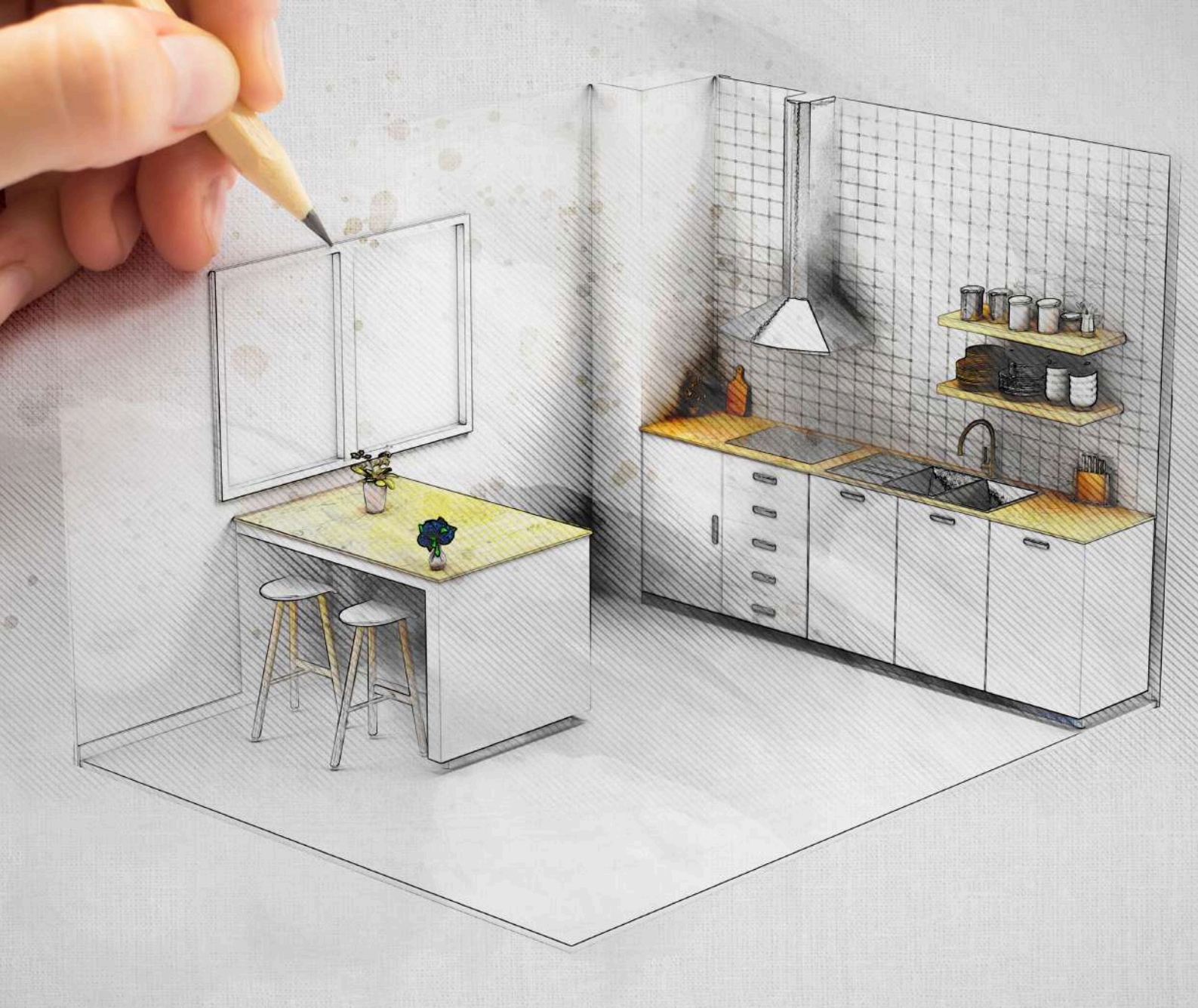




## ABOUT US

At CelestraOne, we deliver premium building materials, including Natural Stone (Granite, Marble, Quartzite, Onyx, Agate including exotic ones), Quartz, Porcelain Slab, Marble Mosaic Tiles, SPC/ LVT Glue Down/ Laminate Flooring and many more, tailored for commercial, residential, hospitality, and institutional projects. We source only premium quality materials from trusted suppliers keeping the products offering consistent. Driven by a commitment to sustainability and client success, we combine industry expertise with a progressive approach to building materials. Our team values long-term relationships, offering tailored solutions, transparency, and support at every stage.

We don't just provide materials; we bring your vision to life with products that make a lasting impact.



## VISION

"To be the leading global supplier of premium quality, sustainably sourced building materials, transforming spaces while contributing to a more eco-friendly and responsible construction industry."

## MISSION

"To provide premium quality quartz, granite, and flooring materials to customers while ensuring sustainability and cost-efficiency."

## YOUR TRUSTED PARTNER

**01**      **Ordered**



**02**      **Produced**



**03**      **Shipped**



**04**      **Delivered**

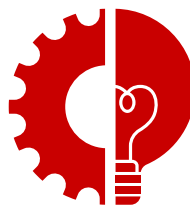




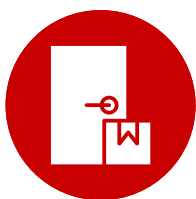
## OUR PROMISE



**Premium Quality**



**Custom solution**



**Doorstep delivery**



**24x7 support**



## SPECIFICATIONS

**Plank size:**

48"x7.7" (1215mmx196mm)  
60"x9.4" (1515mmx238mm)  
72"x7.7" (1825mmx196mm)  
72"x9.4" (1825mmx238mm)  
87"x7.7" (2210mmx196mm)  
87"x9.4" (2210mmx238mm)

**Total thickness:**

8mm\* | 10mm | 12mm

**Waterproof:**

8% swelling

**HDF grade:**

Carb 2

**Wear resistance:**

AC3

**Bevels:**

Painted

**Click-Lock:**

Unilin

**Embossing:**

EIR

\*8 mm thickness is available only for 48"x7.7" and 60"x9.4"

**Note:**

Dispatch within 30 Days; MOQ of 1 container/ design  
Option for white labelling with custom box packaging



## BENEFITS

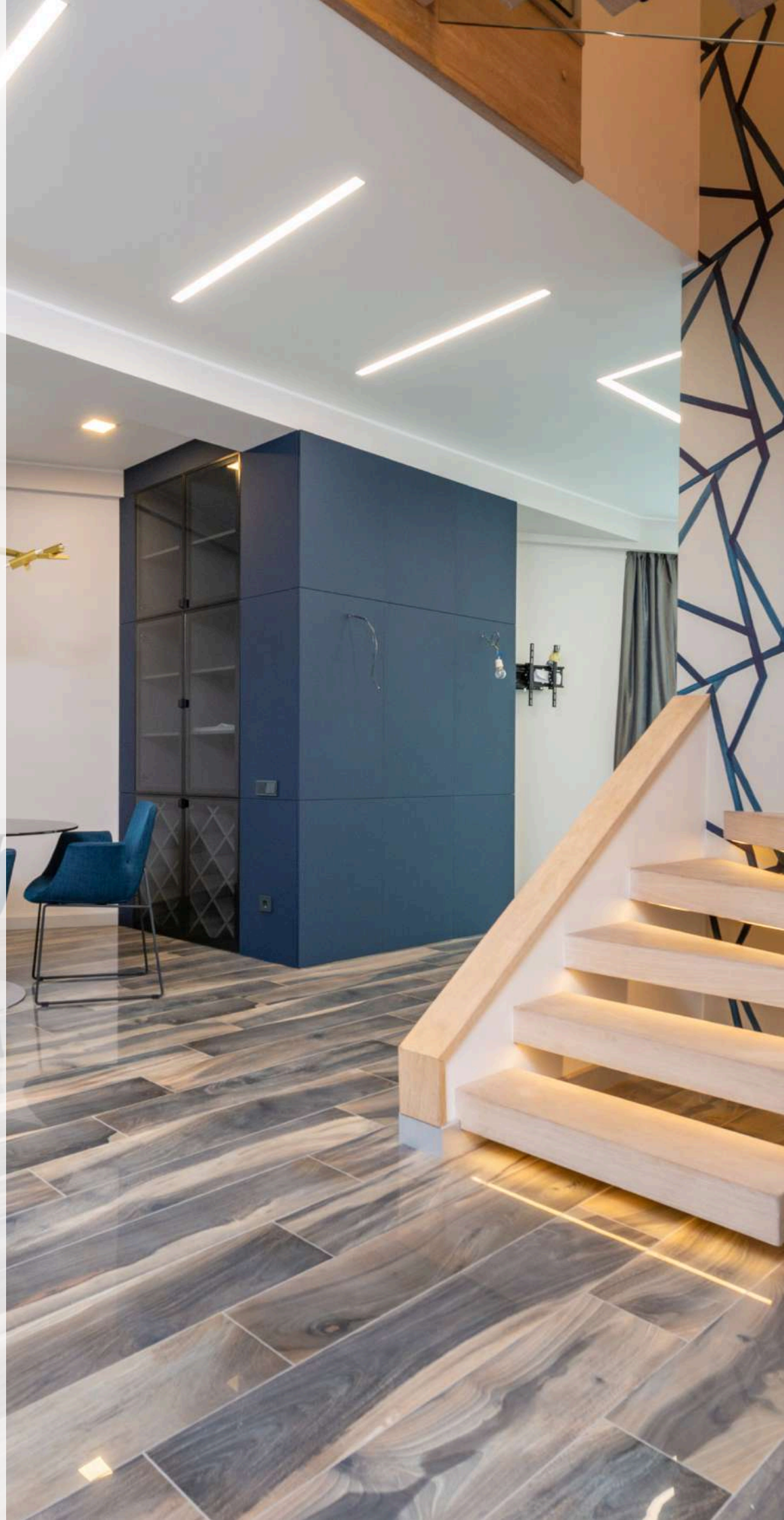
- Scratch resistant
- Water resistant
- Slip resistant
- Ease of installation
- Pet friendly
- Aesthetic Appeal
- Comfort Underfoot

## APPLICATIONS

- Residential
- Commercial
- Retail
- Hospitality

# LAMINATE FLOORING DESIGNS

*Premium Luxury series*



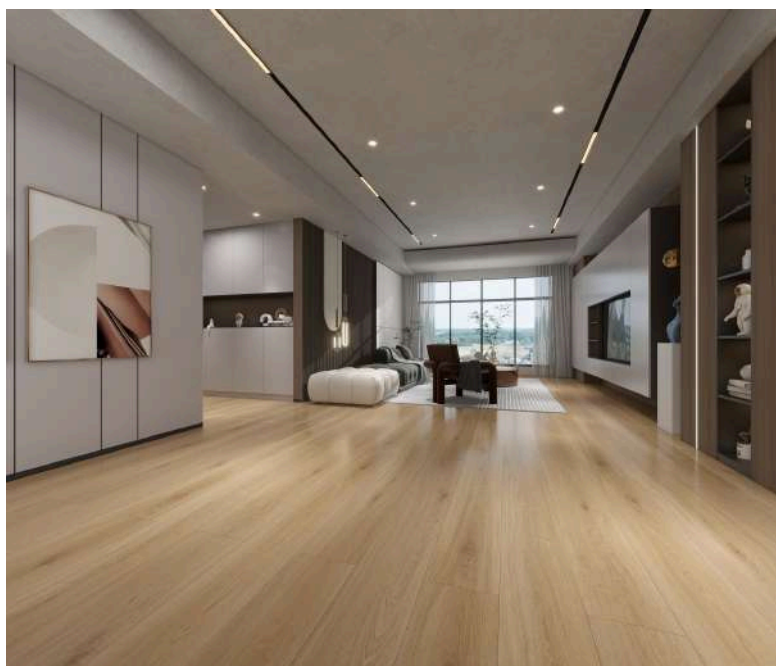
# LAMINATE FLOORING DESIGNS

*Premium luxury series*

**Design code:** V1-LAM-00001



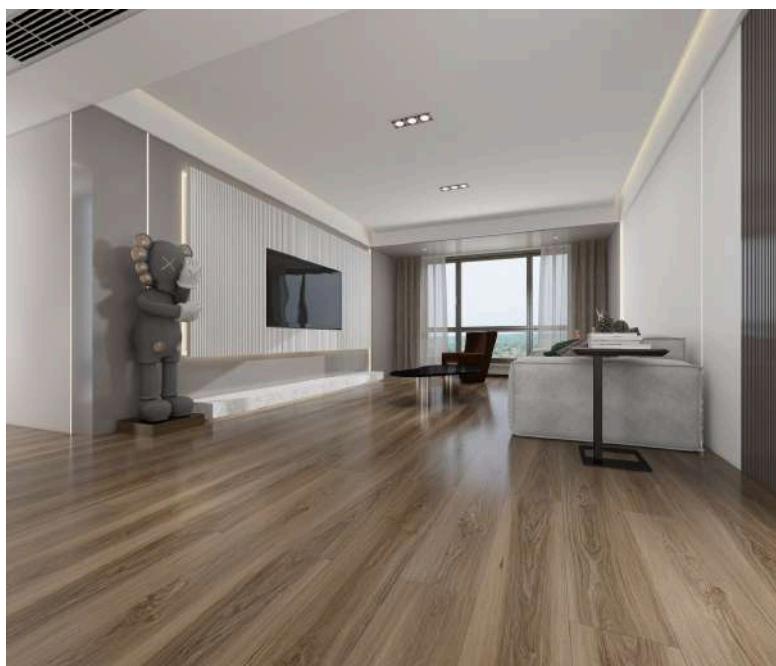
**Design code:** V1-LAM-00002



# LAMINATE FLOORING DESIGNS

## *Premium luxury series*

**Design code:** V1-LAM-00003



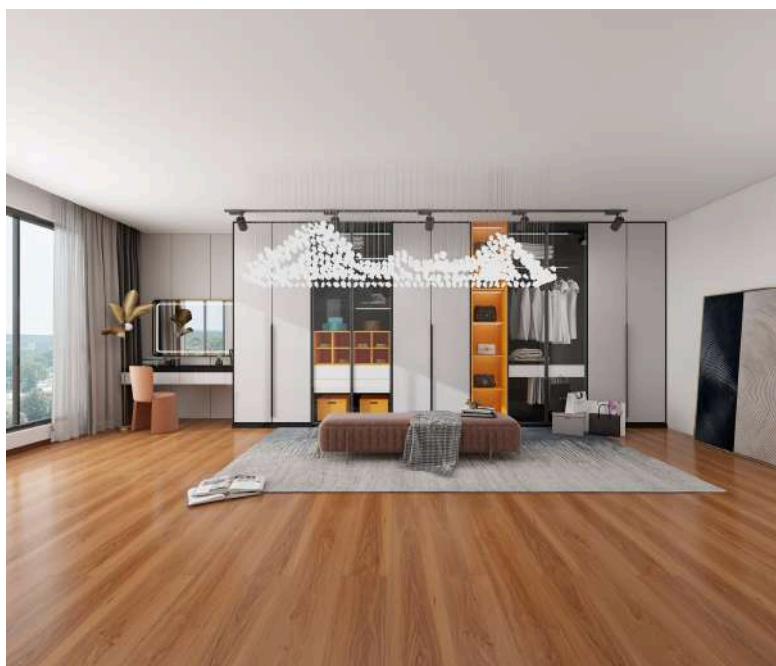
**Design code:** V1-LAM-00004



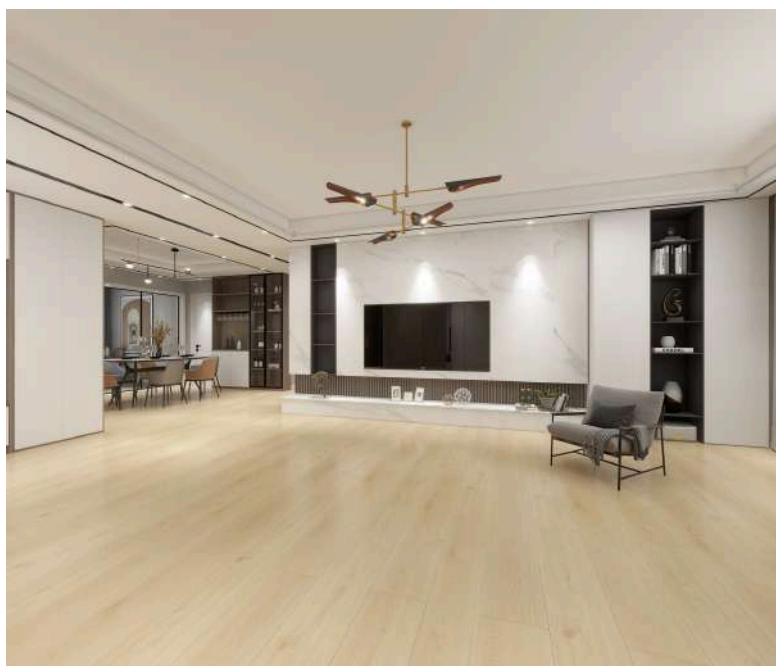
# LAMINATE FLOORING DESIGNS

## *Premium luxury series*

**Design code:** V1-LAM-00005



**Design code:** V1-LAM-00006



# LAMINATE FLOORING DESIGNS

## *Premium luxury series*

**Design code:** V1-LAM-00007



**Design code:** V1-LAM-00008



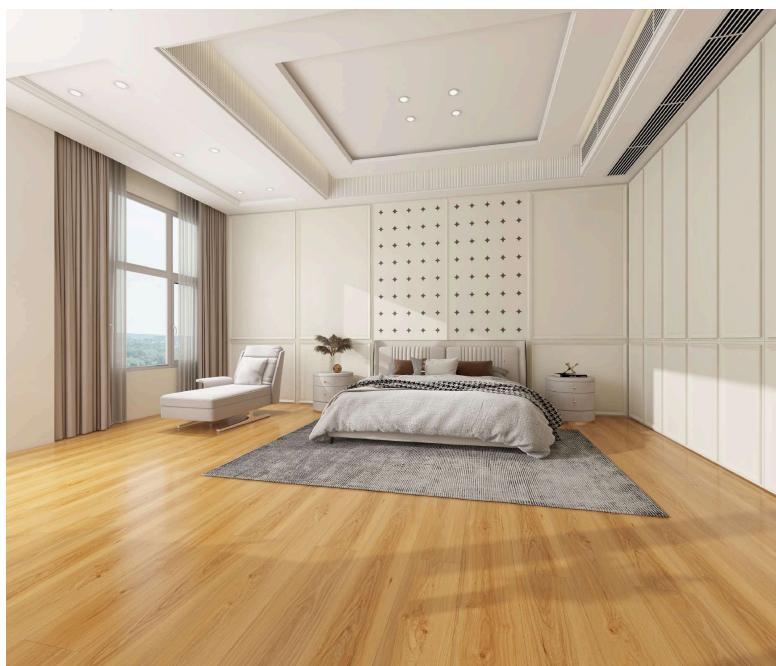
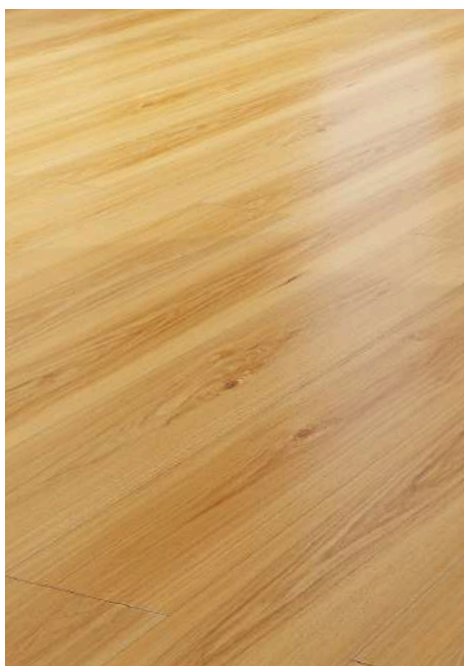
# LAMINATE FLOORING DESIGNS

*Premium luxury series*

**Design code:** V1-LAM-00009



**Design code:** V1-LAM-00010



# LAMINATE FLOORING DESIGNS

## *Premium luxury series*

**Design code:** V1-LAM-00011



**Design code:** V1-LAM-00012





# LET'S TALK!

## CONTACT US



[www.celestraone.com](http://www.celestraone.com)



[info@celestraone.com](mailto:info@celestraone.com)



+1-760-606-1623



+91-636-365-7669



Order Free sample/ Quote!  
[www.celestraone.com/contactus](http://www.celestraone.com/contactus)



Appointment!  
[www.celestraone.com/appointment/1](http://www.celestraone.com/appointment/1)

## SCAN TO VISIT US



Follow us:

