



# LAMINATE FLOORING CATALOG

**2025**



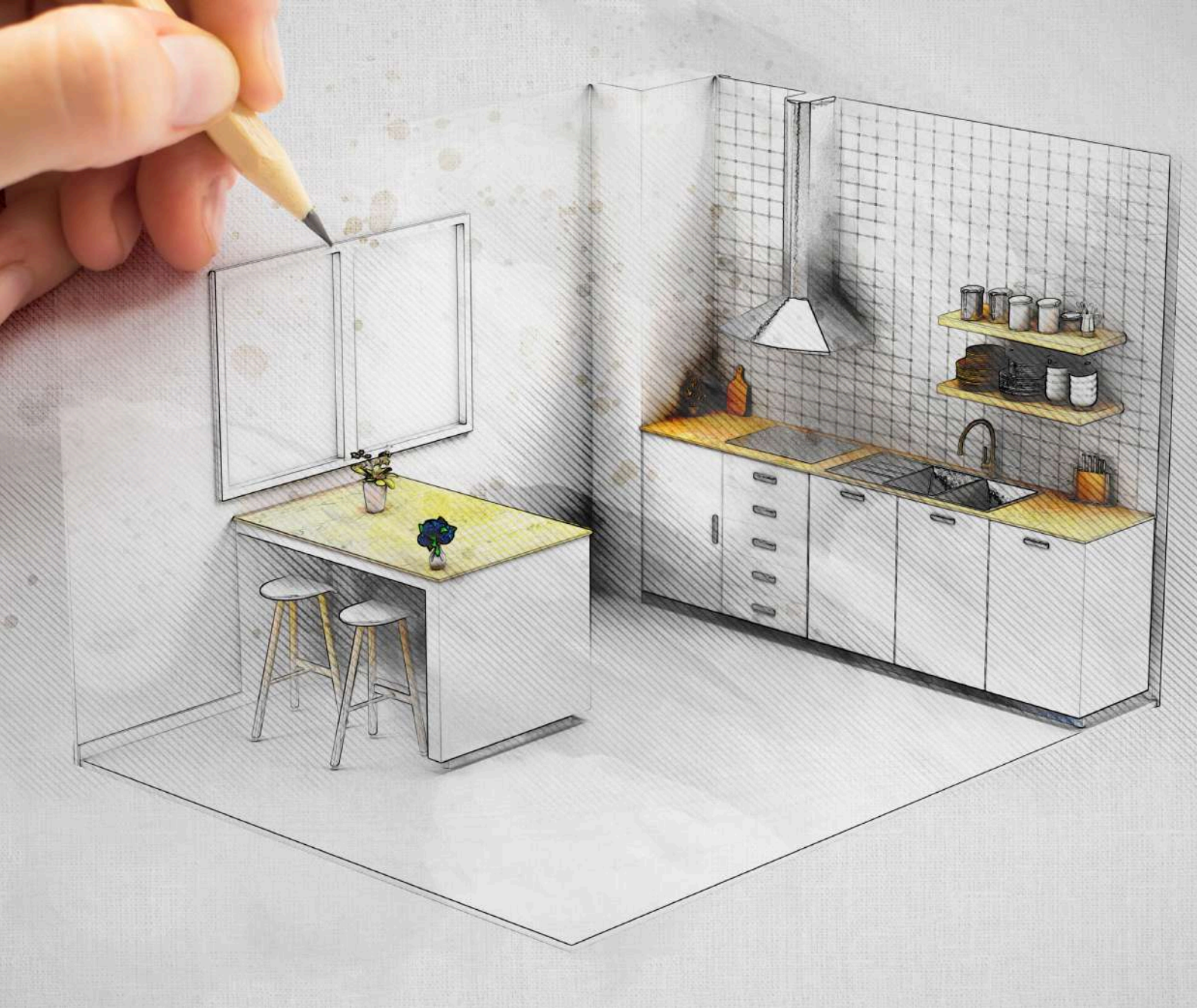


## ABOUT US

At CelestraOne, we deliver premium quality building materials, including natural stone, quartz, and SPC flooring, tailored for commercial, residential, hospitality, and institutional projects. We source only premium quality materials from trusted suppliers in India and Vietnam. Driven by a commitment to sustainability and client success, we combine industry expertise with a progressive approach to building materials. Our team values long-term relationships, offering tailored solutions, transparency, and support at every stage.

We don't just provide materials; we bring your vision to life with products that make a lasting impact.





## VISION

"To be the leading global supplier of premium quality, sustainably sourced building materials, transforming spaces while contributing to a more eco-friendly and responsible construction industry."

## MISSION

"To provide premium quality quartz, granite, and flooring materials to customers while ensuring sustainability and cost-efficiency."

## YOUR TRUSTED PARTNER

**01**      **Ordered**



**02**      **Produced**



**03**      **Shipped**



**04**      **Delivered**





## OUR PROMISE



**Premium Quality**



**Custom solution**



**Doorstep delivery**



**24x7 support**





## SPECIFICATIONS

**Plank size:**

48"x7.7" (1215mmx196mm)  
60"x9.4" (1515mmx238mm)  
72"x7.7" (1825mmx196mm)  
72"x9.4" (1825mmx238mm)  
87"x7.7" (2210mmx196mm)  
87"x9.4" (2210mmx238mm)

**Total thickness:**

8mm\* | 10mm | 12mm

**Waterproof:**

8% swelling

**HDF grade:**

Carb 2

**Wear resistance:**

AC3

**Bevels:**

Painted

**Click-Lock:**

Unilin

**Embossing:**

EIR

\*8 mm thickness is available only for 48"x7.7" and 60"x9.4"

**Note:**

Dispatch within 30 Days; MOQ of 1 container/ design  
Option for white labelling with custom box packaging



## **BENEFITS**

- Scratch resistant
- Water resistant
- Slip resistant
- Ease of installation
- Pet friendly
- Aesthetic Appeal
- Comfort Underfoot

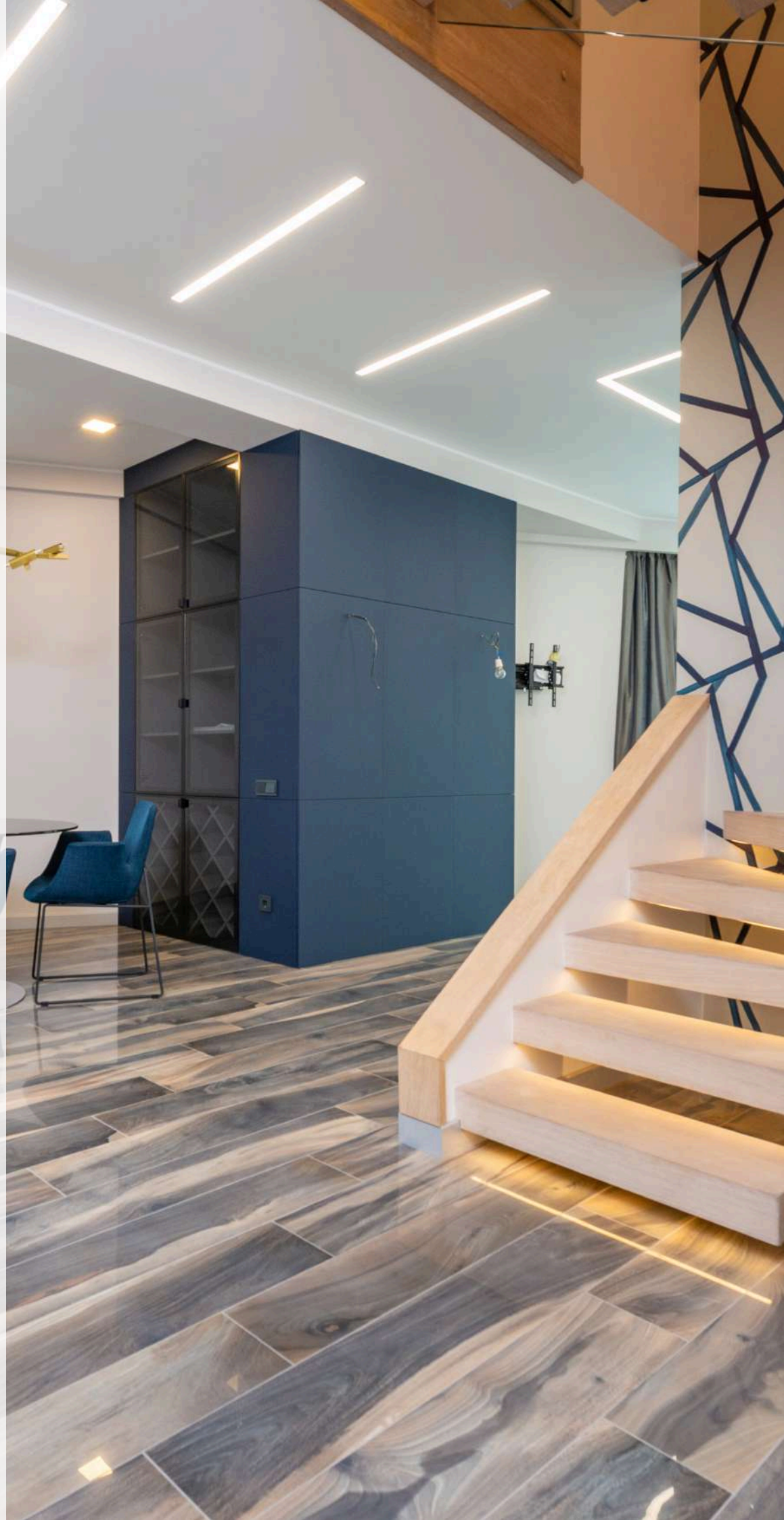
## **APPLICATIONS**

- Residential
- Commercial
- Retail
- Hospitality



# LAMINATE FLOORING DESIGNS

*Premium Luxury series*





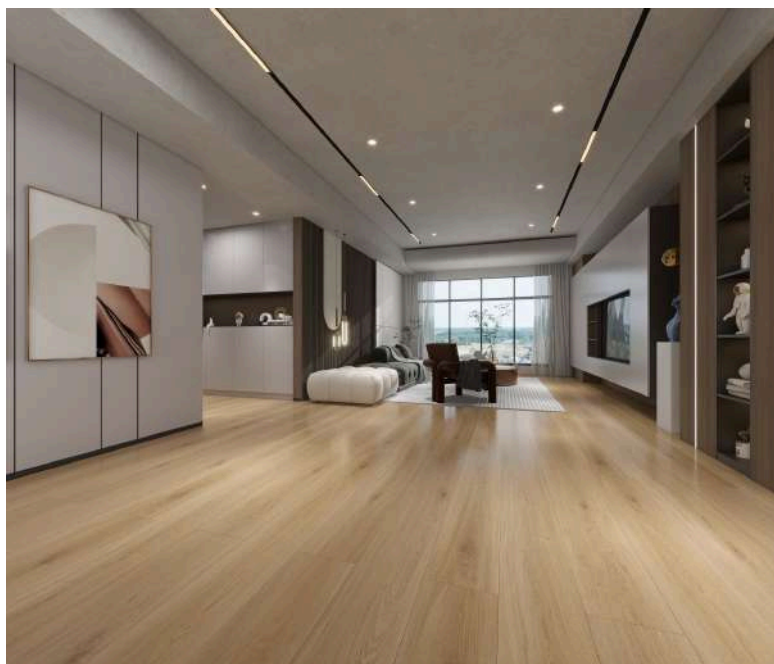
# LAMINATE FLOORING DESIGNS

*Premium luxury series*

**Design code:** V1-LAM-00001



**Design code:** V1-LAM-00002



# LAMINATE FLOORING DESIGNS

## *Premium luxury series*

**Design code:** V1-LAM-00003



**Design code:** V1-LAM-00004

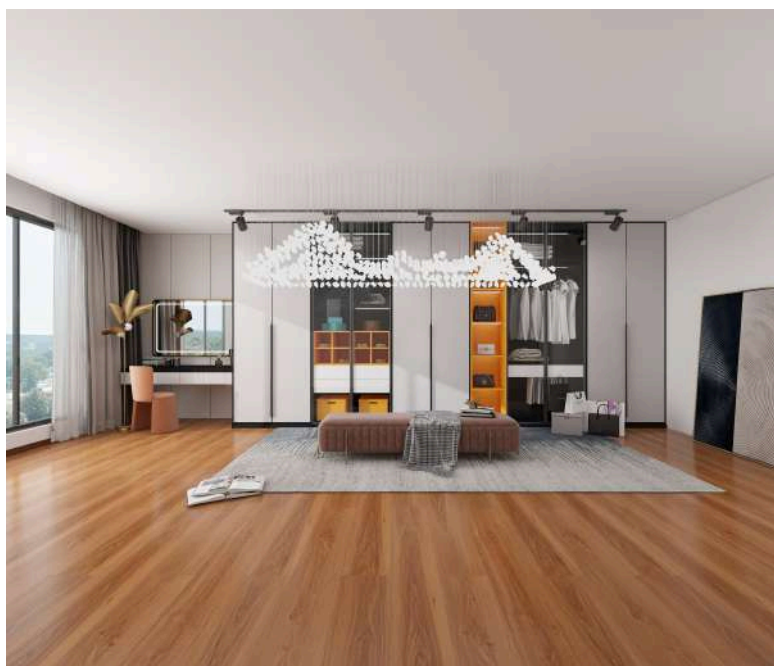




# LAMINATE FLOORING DESIGNS

## *Premium luxury series*

**Design code:** V1-LAM-00005



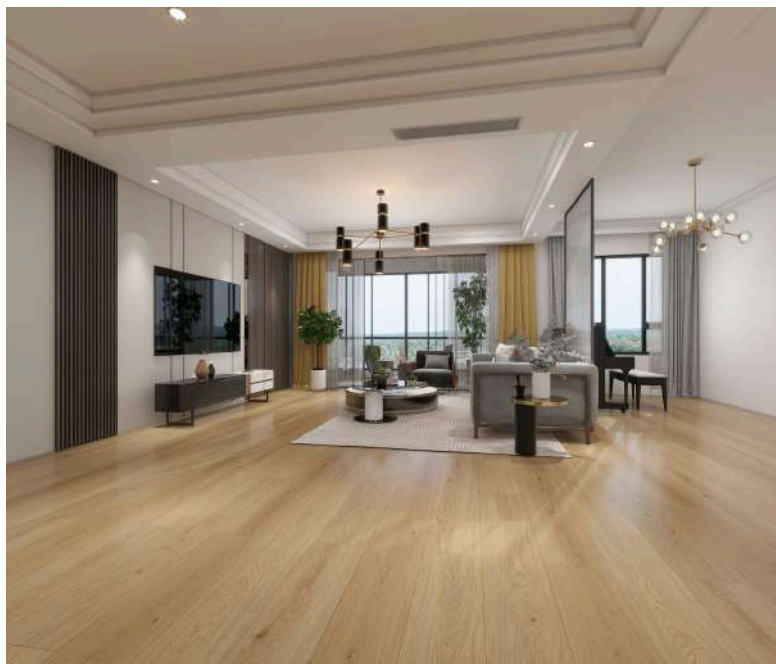
**Design code:** V1-LAM-00006



# LAMINATE FLOORING DESIGNS

## *Premium luxury series*

**Design code:** V1-LAM-00007



**Design code:** V1-LAM-00008

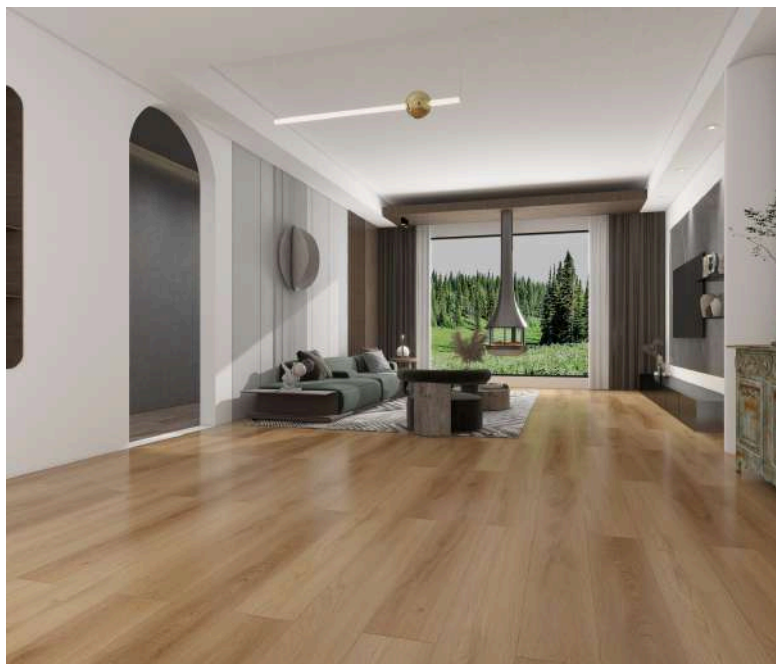




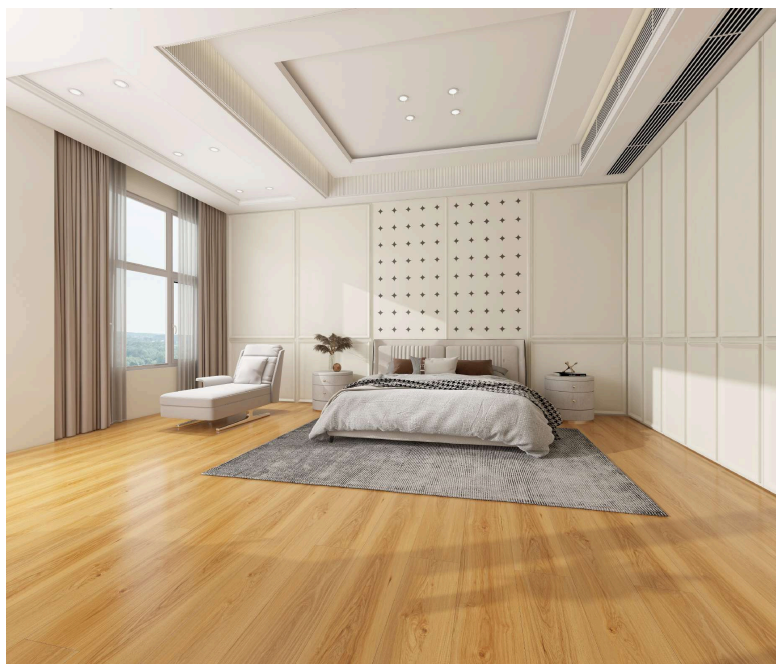
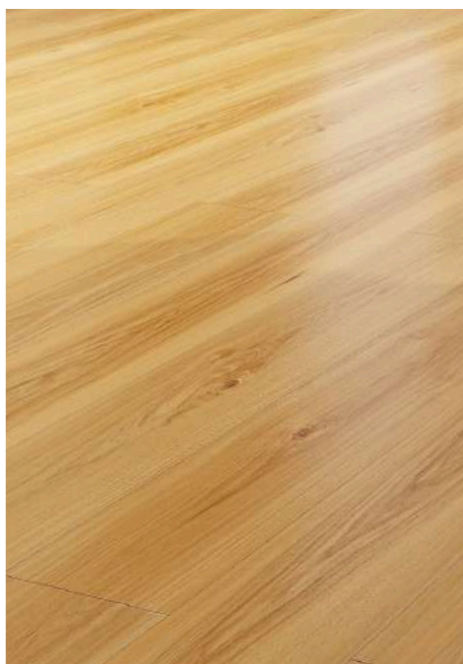
# LAMINATE FLOORING DESIGNS

*Premium luxury series*

**Design code:** V1-LAM-00009



**Design code:** V1-LAM-00010



# LAMINATE FLOORING DESIGNS

## *Premium luxury series*

**Design code:** V1-LAM-00011



**Design code:** V1-LAM-00012







# LET'S TALK!

## CONTACT US



[www.celestraone.com](http://www.celestraone.com)



[info@celestraone.com](mailto:info@celestraone.com)



+1-760-606-1623



+91-636-365-7669



Order Free sample/ Quote!  
[www.celestraone.com/contactus](http://www.celestraone.com/contactus)



Appointment!  
[www.celestraone.com/appointment/1](http://www.celestraone.com/appointment/1)

## SCAN TO VISIT US



Follow us:

